



A Just Transition
or
Just a Transition?

“...deliver a decarbonised transport network that supports and promotes equality...”.

Strengthening the right to independent living

2021

“... disabled people continue to face barriers to accessing public transport, and efforts to improve the situation have been **slow and piecemeal**”

What's waiting in the new Secretary of State for Transport's in-tray?

Madeleine Stewart

Transport for All's Policy and Research Officer

Transport for All's Policy and Research Officer, Madeleine Stewart, looks at 4 key areas that should be at the top of the to-do list for the incoming Transport Secretary.



After a dramatic summer of political resignations and leadership battles, the autumn has brought with it a new Prime Minister and a new Cabinet, including Anne-Marie Trevelyan MP as the Secretary of State for Transport. This is a fresh opportunity for the new Cabinet, Trevelyan in particular, to renew the government's focus and look towards making the UK's transport networks more accessible for disabled people. But how should they do that? Transport for All's Policy and Research Officer, Madeleine Stewart, looks at 4 key areas that should be at the top of the to-do list for the incoming Transport Secretary – the thirteenth to take post since 2000.

1. Rail station staffing

As Anne-Marie Trevelyan sits down to her first week as Secretary of State for Transport, high on the list for things to tackle will be the ongoing rail station staffing dispute inherited from predecessor, Grant Shapps.

Travelling by rail for disabled people currently is fraught with issues: from the absence of reliable and accurate information about station accessibility, to the total lack of step-free access at 75% of train stations across the UK, to issues with poor signage, wayfinding, audio announcements, tactile paving, and more. Bold action is needed to create a more accessible rail network.

The [William-Shapps Plan for Rail](#) outlined grand plans for overhauling the railways, including far reaching

2022

Inclusive Transport Strategy

“...failed to have an impact on transport accessibility and it appears as though transport is, in fact, regressing”



ARE WE THERE YET?

Barriers to transport for
disabled people in 2023

Highlights Report

2023 (last week)

“[The findings] ...support what disabled people have been saying for a long time: we do not have equitable access to any mode of transport, and the *impacts of this injustice can be felt in every corner of our lives*”



ARE WE THERE YET?

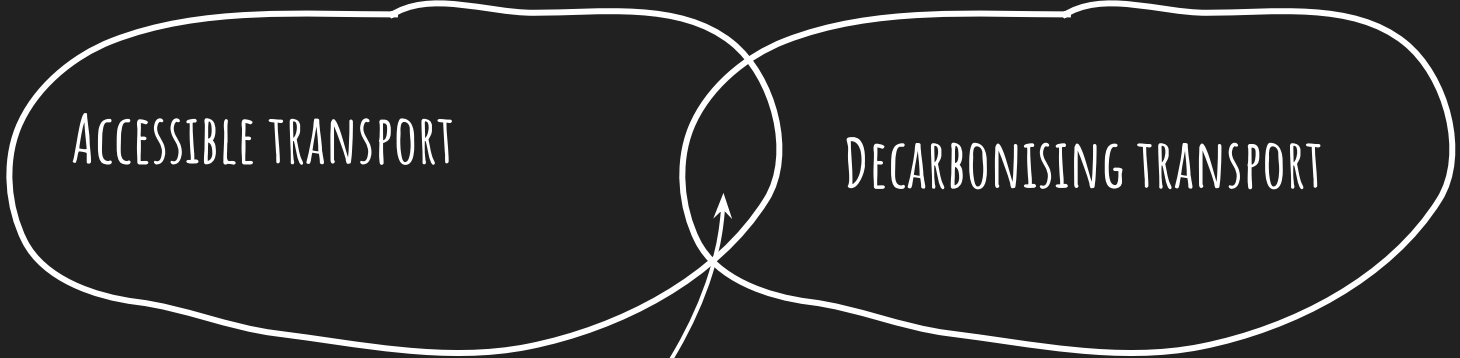
Barriers to transport for
disabled people in 2023

Highlights Report

“... the majority (71%) of disabled people said they would like to use environmentally friendly modes of transport more, but that they were **prevented from doing so by a lack of accessibility and availability**”

ACCESSIBLE TRANSPORT

DECARBONISING TRANSPORT



ACCESSIBLE DECARBONISED
TRANSPORT?

The need for speed

Bad Language

A lack of vision

Resilient status quo

The need for speed

A SLOW TRANSITION

Bad Language

A NEW LEXICON

A lack of vision

COLLECTIVE IMAGINATION

Resilient status quo

OFFER ALTERNATIVES

THE JOURNEY AS A SYSTEM

PLANNING

LEAVING

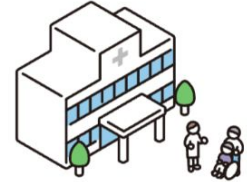
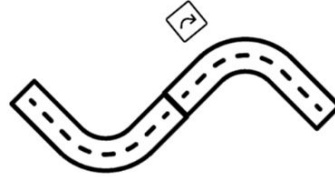
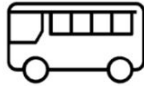
WAITING

ON BOARD

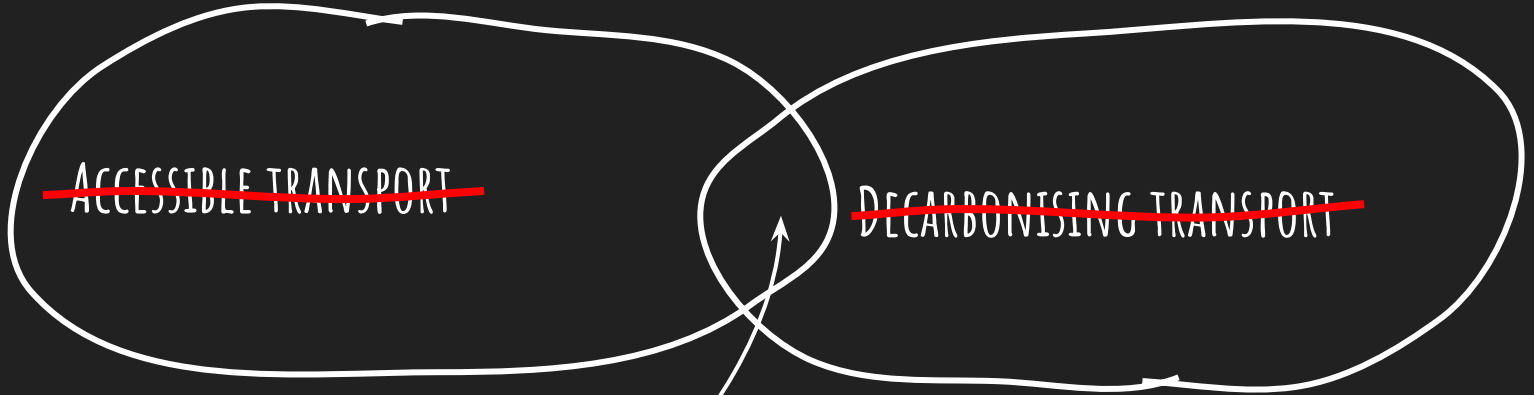
CONNECTING

ARRIVING

RETURN



A NEW LEXICON



~~ACCESSIBLE DECARBONISED
TRANSPORT~~

INCLUSIVE, LOW CARBON
JOURNEYS

FUTURE JOURNEYS ≈ USING OUR COLLECTIVE IMAGINATION



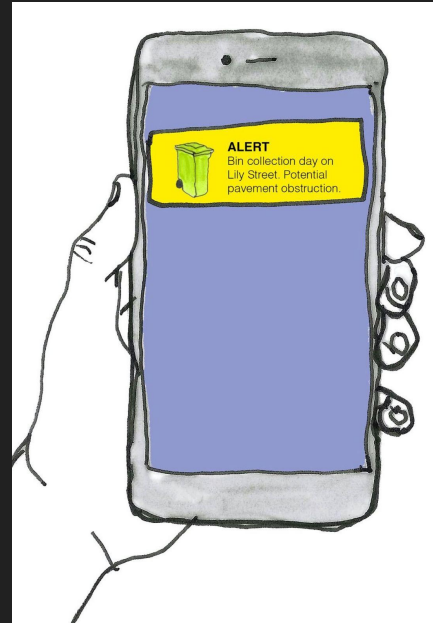
FUTURE JOURNEYS ≈ USING OUR COLLECTIVE IMAGINATION



FUTURE JOURNEYS ≈ USING OUR COLLECTIVE IMAGINATION



FUTURE JOURNEYS ≈ USING OUR COLLECTIVE IMAGINATION



Design Council

Our Mission Our Work

Design for Planet

This is our mission. It's our call to action.

The climate crisis is the biggest challenge of our lifetime and design has a critical role to play.

THE JOURNEY AS A SYSTEM (OFFER ALTERNATIVES)

PLANNING

LEAVING

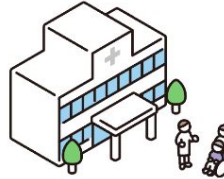
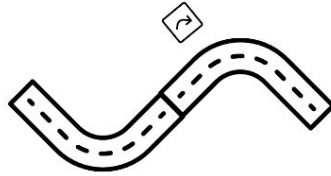
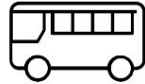
WAITING

ON BOARD

CONNECTING

ARRIVING

RETURN



THE JOURNEY AS A SYSTEM (OFFER ALTERNATIVES)

PLANNING

LEAVING

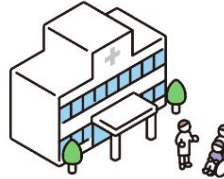
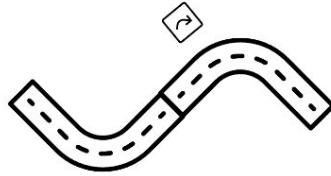
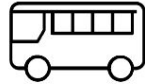
WAITING

ON BOARD

CONNECTING

ARRIVING

RETURN



Scope 3

Scope 2

Scope 1

Scope 2

Scope 3



GREENHOUSE
GAS PROTOCOL



SCIENCE
BASED
TARGETS

THE JOURNEY AS A SYSTEM (OFFER ALTERNATIVES)

PLANNING

LEAVING

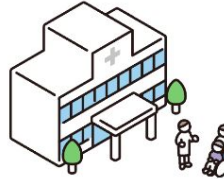
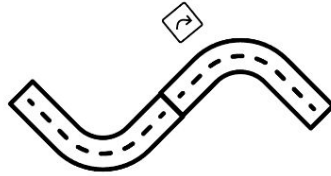
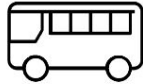
WAITING

ON BOARD

CONNECTING

ARRIVING

RETURN



Scope 3

Scope 2

Scope 1

Scope 2

Scope 3



GREENHOUSE
GAS PROTOCOL



SCIENCE
BASED
TARGETS



Inclusive Journey
Protocols



Inclusion-Based
Targets



GREENHOUSE
GAS PROTOCOL



**Inclusive Journey
Protocols**

Emissions reduction plan

- 2023 charging infrastructure
- 2024 refit bus station
- 2025 new electric fleet
- 2026 new route plan

2035 Deadline

Exclusions reduction plan

- information audit
- toilet upgrade
- Wheelchair policy review
- clear pathways project

2035 Deadline!!

FUTURE JOURNEYS PROCESS

LEARN

IMAGINE

VIEW THE ENTIRE JOURNEY SYSTEM - AND TRANSPORT AS AN ELEMENT

CREATE AND



ALIGN PLANS

DETAILED, ACTIONABLE PLAN FOR A JUST TRANSITION

“Good theories aren’t always right: but they can be useful. Utopias tend to be wrong, but they can be useful even in their wrongness. This is why I am particularly interested in ideas which are sufficiently specific that they can at least be interrogated or disagreed with, rather than ones which are very vague”

Geoff Mulgan, *The Imaginary Crisis*

Andy Hyde

Go Upstream

hello@upstream.scot

www.upstream.scot